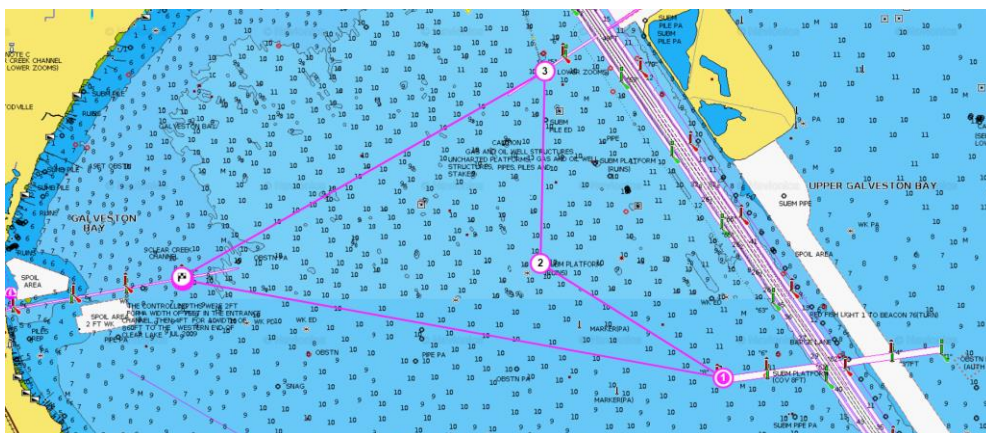


**TASS Regatta**  
**Sweetheart Valentine Race**

**Course Length: 10.10**  
**2/10/24**

Boat Name	TASS Handicap	Seconds Per mile	Adjust	Time Adjust	Start Time	Finish Time
OxBow	280	0	0		13:00:00	
Boat B	236	44	444	07:24	13:07:24	
Andiamo	235	45	455	07:34	13:07:34	
Sloop Dog	224	56	566	09:26	13:09:26	
Mystic Winds	224	56	566	09:26	13:09:26	
Opus	210	70	707	11:47	13:11:47	
Sunspot Baby	206	74	747	12:27	13:12:27	
Rainbow	173	107	1081	18:01	13:18:01	
Luna Sea	172	108	1091	18:11	13:18:11	
Astarte	145	135	1364	22:44	13:22:43	
Alive and Free	145	135	1364	22:44	13:22:43	
Jus Knot Rite	120	160	1616	26:56	13:26:56	

Mark	Lat	Long	Bearing to next Mark	Distance to next Mark
Kemah 1	29° 34.673	94° 59.516	START	100 4.00
SBC 8	29° 32.406	94° 55.078	PORT	301 1.5
H Mark	29° 33.256	94° 56.54	STBD	002 1.5
F Mark	29° 33.787	94° 56.993	PORT	240 3.1
Kemah 2	29° 33.166	94° 59.546	STBD	10.10



**INSTRUCTIONS**

1. Upon completion of the race, you need to record your finish time per GPS. That time must be texted to the Race Czar at 713.412.7693 in a timely fashion.
2. Early overs at the start are expected to return to the Start and do a 360 turn.
3. Keep clear of the start box until your start time.
4. Standard rules of racing apply. All roundings must be made as prescribed. There are no protests.
5. Be sure to turn on your RaceQ cell phone app and turn on live streaming at top of the page. The site for the race is <http://raceqs.com/regattas/106149>
6. Any questions, you can reach me by phone at 713.412.7693. Monitor 71 for other boats.

**SPECIAL NOTE: Rule 55.2 Spinnaker Poles; Whisker Poles**

Only one spinnaker pole or whisker pole shall be used at a time except when gybing. When in use, it shall be attached to the foremost mast.

**This means only a spinnaker pole or a whisker pole can be used. Boat hooks held by crew or propped against the mast are not legal.**